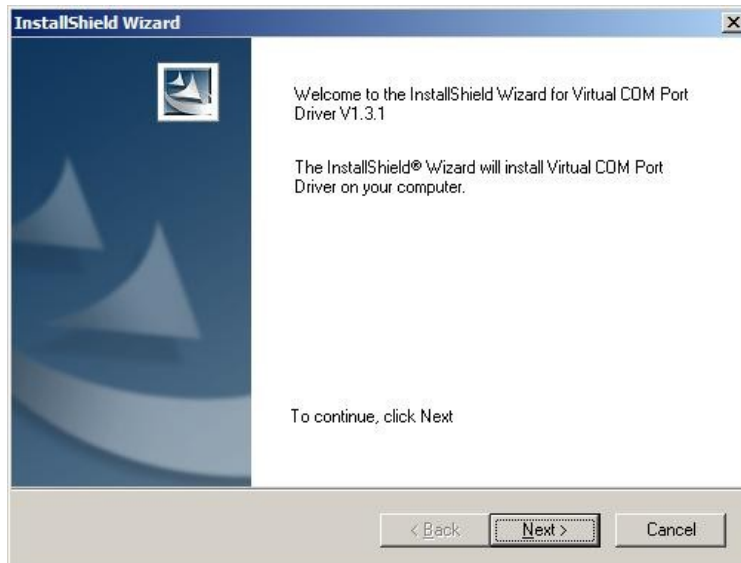


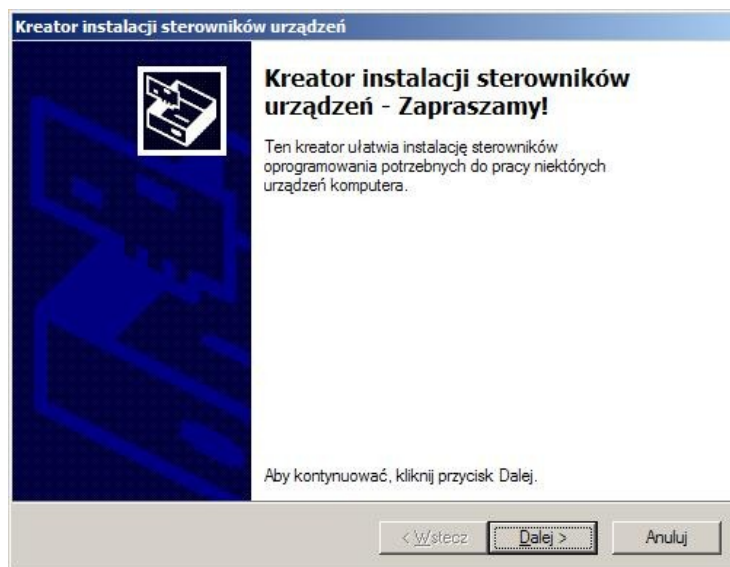
## PC-USB driver installation (using preinstaller)

1. Preinstall Virtual COM Port Drivers from stm32\_vcp.zip.  
Use VCP\_V1.3.1\_Setup.exe for 32-bit versions of Windows or VCP\_V1.3.1\_Setup\_x64.exe for 64-bit versions of Windows.

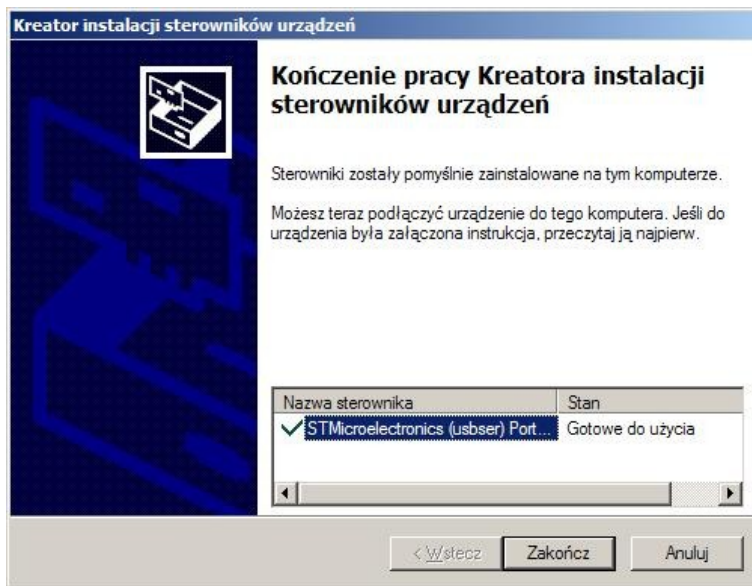
2. You will see:



3. Press next and you will see

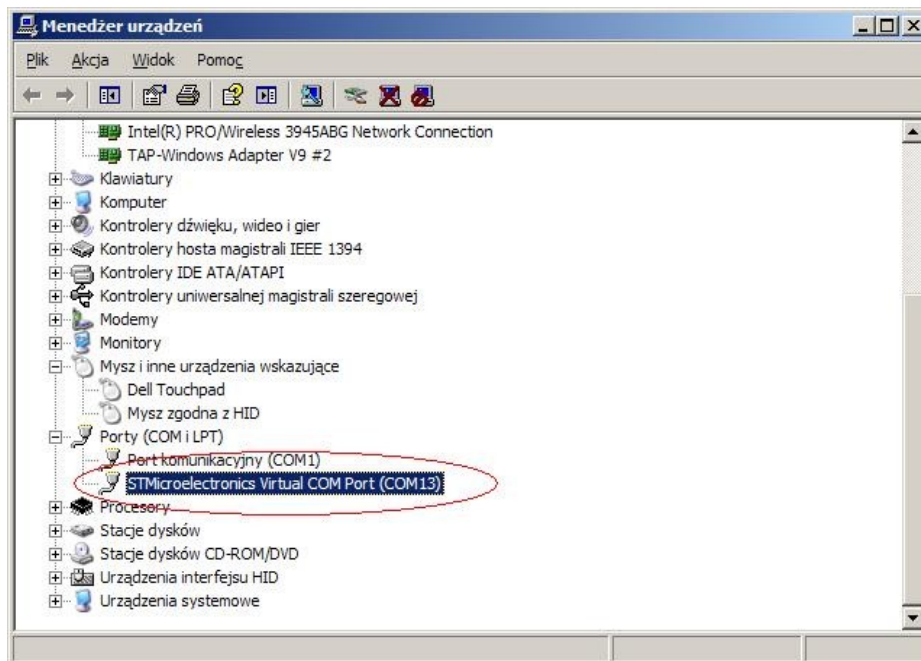


4. Press next and you will see



5. Connect Jota to PC using USB A-B cable (in Jota port is called PC port USB)

6. Drivers will be installed authomatically. In Control Panel->Device Manager you will see:



7. Try to connect using back-office or service program.  
8. Remark: in case someone connects at the same time PC port USB and PC port (RS232) only PC port USB will work.